


		GP	31-03-2016		A

UNQUOTED TOLERANCES  
 LINER : ± 1  
 RADIAL : ± 0.2  
 ANGULAR : ± 0.5°

NOTE : CHECK BEND PROFILE BEFORE BENDING



**DRAWING OFFICE MASTER COPY**

DIMENSIONS IN MILLIMETERS UNLESS OTHERWISE STATED

DO NOT SCALE IF IN DOUBT ASK



**SPECIAL PRODUCTS & TECHNOLOGIES**  
 30 EBRAHIM ROAD, ATHLONE INDUSTRIA 2, CAPE TOWN, 7764  
 Tel: +27 21 691 4204 Fax: +27 21 6912574 Web: www.spt.co.za

MATERIAL  
 Material <not specified>  
 THICKNESS: mm

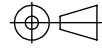
SURFACE TEXTURE : ✓ μm

TREATMENT :

FINISHING PROCESS :

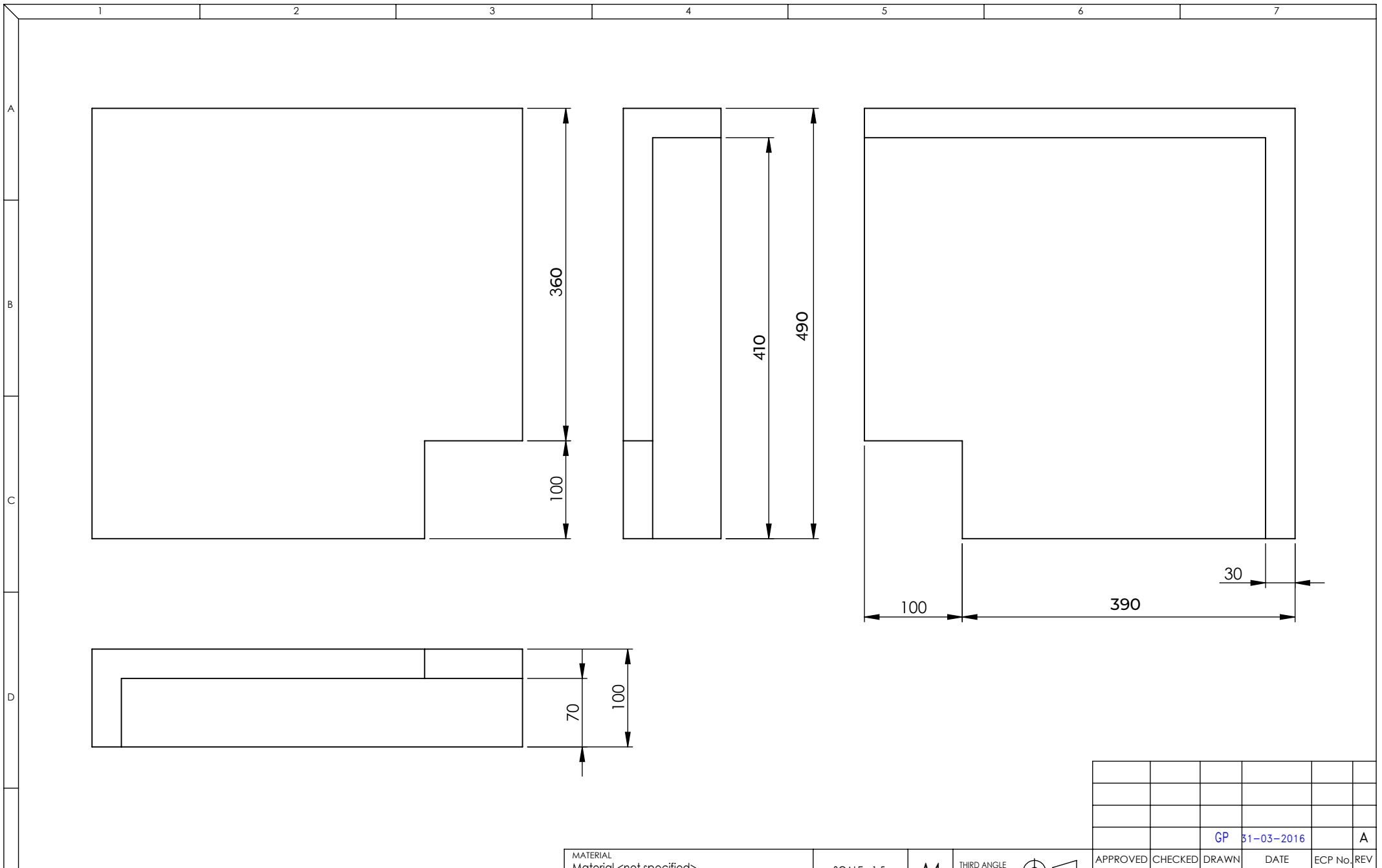
SCALE - 1:5

A4

THIRD ANGLE PROJECTION 

**REVELSTONE**

APPROVED	CHECKED	DRAWN	DATE	ECP No.	REV
SUB-TITLE					
<b>OUTSIDE CORNER 390</b>					
DWG.No. 490 x 390 x100 Outside Corner					



MATERIAL Material <not specified> THICKNESS: mm
SURFACE TEXTURE : <input checked="" type="checkbox"/> $\mu\text{m}$
TREATMENT :
FINISHING PROCESS :

SCALE - 1:5    A4    THIRD ANGLE PROJECTION

**REVELSTONE**

		GP	31-03-2016		A
APPROVED	CHECKED	DRAWN	DATE	ECP No.	REV
SUB-TITLE					
OUTSIDE CORNER 390					
DWG.No. 490 x 390 x100 Outside Corner					

UNQUOTED TOLERANCES  
LINER :  $\pm 1$   
RADIAL :  $\pm 0.2$   
ANGULAR :  $\pm 0.5^\circ$

NOTE : CHECK BEND PROFILE BEFORE BENDING

DIMENSIONS IN MILLIMETERS UNLESS OTHERWISE STATED    DO NOT SCALE IF IN DOUBT ASK

**SPECIAL PRODUCTS & TECHNOLOGIES**  
30 EBRAHIM ROAD, ATHLONE INDUSTRIA 2, CAPE TOWN, 7764  
Tel: +27 21 691 4204 Fax: +27 21 6912574 Web: www.spt.co.za

**DRAWING OFFICE MASTER COPY**